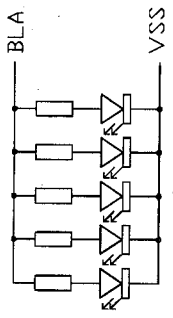
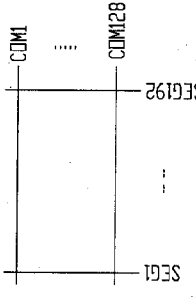
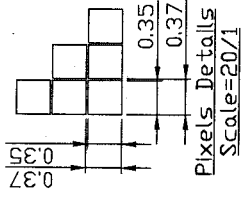
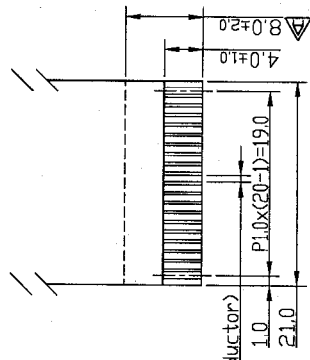
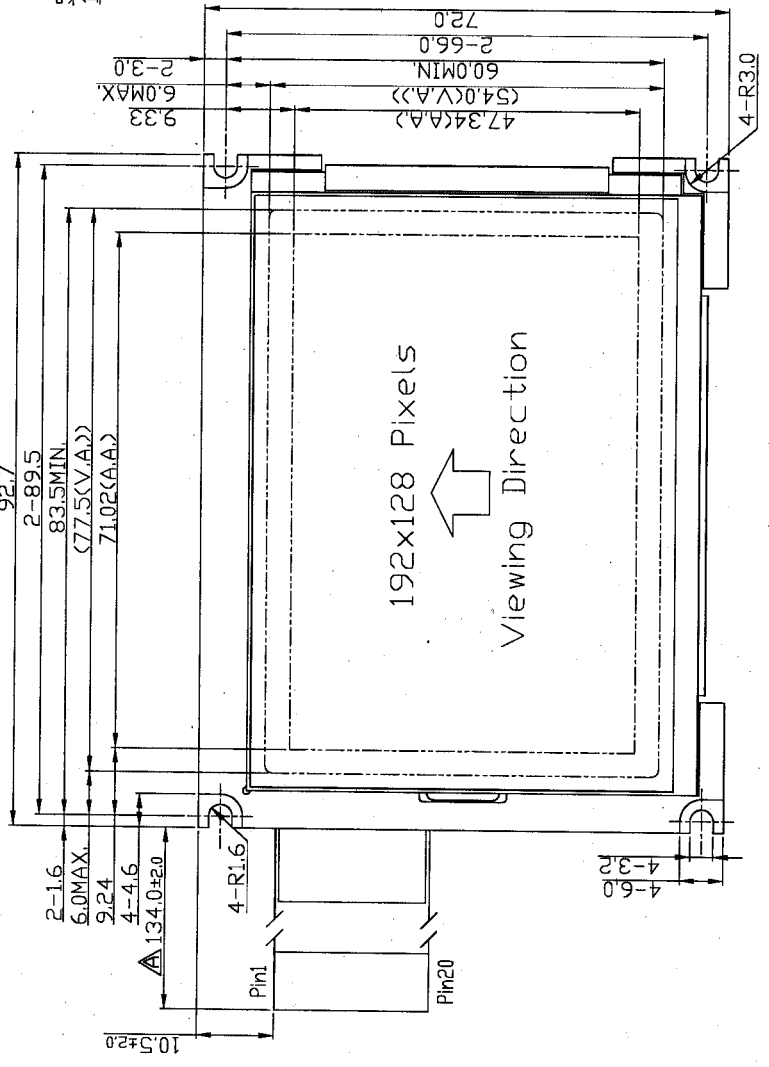
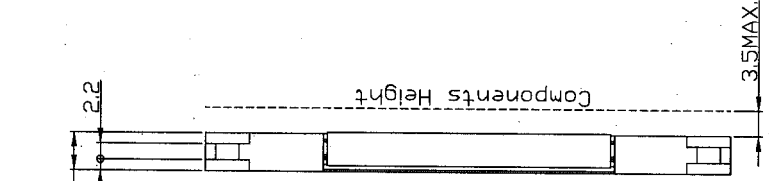


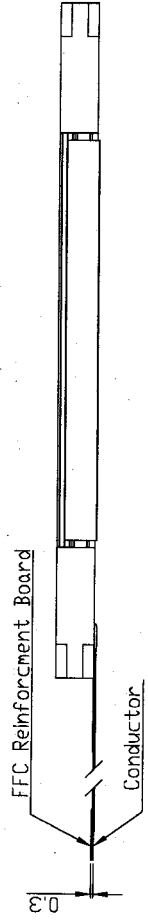
Terminal No.	Pin Name
1	VOUT
2	V0
3	VDD
4	VSS
5	NC
6	NC
7	/CS
8	RS
9	/MR
10	/RD
11	DB0
12	DB1
13	DB2
14	DB3
15	DB4
16	DB5
17	DB6
18	DB7
19	/RST
20	BLA



Backlight Circuit Details
(No. of LED = 5pcs)
Scale=free



FFC Terminal Details
(Conductor Side)
Scale=2/1



- Note:
- *1. LCD Display Type : FSTN, Positive, Transflective
 - *2. Viewing Direction : 6H
 - *3. Duty : 1/128
 - *4. Operating Voltage : 5.0V
 - *5. Backlight Color : White
 - *6. Built in LCD Controller : SID13305(or equivalent)
 - *7. Operating Temperature : -20°C ~ 70°C
 - *8. Storage Temperature : -30°C ~ 80°C
 - *9. An external VR(25k~50k) must be connected for Contrast Control

C					
B					
A	-Revise FFC Length	LI Shual			
	-Revise FFC Dimension	2005-11-04			
	-Add Backlight Color				
	-Typing Connection				
	Rev Note	BTG-191201B-WT6WLW	Date		
	Dwg No.	MK-001042a-1-1	2005-09-02		
	Scale	3/2	Unit	mm	
	Sheet	A3	Checked		
	Approved		Drawn	LI Shual	

BeyondTek, Inc.